

Backwash Valves

Sta-Rite Backwash Valves

- SR17170** 2" ABS Unitrol Valve
SR17175 2" Multiport Rotary Valve

Pac Fab Backwash Valves

- PA17180** 2" PVC slide valve, D. E./ Sand filters
PA17185 2" Multiport valve, D. E. filters
PA17190 2" Multiport valve, sand filters
PA17191 2" Hi Flow valve, sand filters
PA17192 2" Hi Flow valve, D. E. filters

Valves

Astral Multiport Valve – The multiport valves are constructed of injection molded ABS plastic and have 6 positions selections, side inlet, bottom outlet, sight glass and necessary plumbing for assembly. The multiport valves are to be used with the Astral 30", 36" & 42" filters (see Filters section).

2" valve (use w/ filter AFIGF3030SS)
AF09848

2" valve (use w/ filters AF096520100 & AF096450100)
AF16341

2.5" valve (use w/ filters AFIGF3036SS & AF06804)
AF08726



2.5" valve

Sight Glass / Flow Indicators - Available in 1/2" to 3" pipe sizes, single- or double-wall.

Water Sight Glass Flow Indicator - Available 1 1/2" to 8" pipe sizes.



Sight Glasses / Flow Indicators

Astral Electrically Actuated Valves – The Astral electrically actuated valves are for use with the Astral deluxe automatic backwash system. The valves are constructed using the Astral PVC butterfly valve and 110v actuators that are mounted directly to the top of the valve.

- AF02581E** 2.5" Electrically actuated butterfly valve
AF02582E 3" Electrically actuated butterfly valve
AF02583E 4" Electrically actuated butterfly valve
AF02586E 6" Electrically actuated butterfly valve
AF02587E 8" Electrically actuated butterfly valve
AF15846E 10" Electrically actuated butterfly valve

Astral True Union PVC Ball Valves – Injection molded PVC construction with EPDM o-rings.

- AF21997** 1/2" Combo, 240 PSI
AF21998 3/4" Combo, 240 PSI
AF21999 1" Combo, 240 PSI
AF22001 1.5" Combo, 240 PSI
AF22002 2" Combo, 240 PSI
AF07095 2.5" Threaded, 150 PSI
AF06620 2.5" Socket, 150 PSI
AF07096 3" Threaded, 150 PSI
AF07088 3" Socket, 150 PSI
AF07388 4" Threaded, 150 PSI
AF07377 4" Socket, 150 PSI

Lab Cock Valve - Ideal for process control monitoring and as a sampling valve, and the wide choice of models permits all type of hose or thread connections. The 1/4 turn operation allows for precision fingertip flow control. The valve's pressure rating is 120 psi, up to 120 degrees F.

Size: 1/4" only (pipe thread)

The seats are EPDM

Bodies are PVC.

Seal is EPDM.



Lab Cock Valve

Astral Spring Check Valves – Injection molded PVC construction with EPDM o-rings.

- AF22015** 1/2" Combo, 240 PSI
AF22016 3/4" Combo, 240 PSI
AF22017 1" Combo, 240 PSI
AF22019 1.5" Combo, 240 PSI
AF22020 2" Combo, 240 PSI
AF220753 " Threaded, 150 PSI
AF22076 3" Socket, 150 PSI

Astral Ball Check Valves

- AF22077** 1.5" Combo, 240 PSI
AF22078 2" Combo, 240 PSI

Astral PVC Flap / Check Flat Valves

Injection molded PVC construction with EPDM gaskets.

- AF08986** 4" Flap Valve
AF08988 6" Flap Valve
AF08989 8" Flap Valve



Astral Flap Valve

Butterfly Valves

Astral PVC Butterfly Valves – Injection molded PVC construction available with EPDM or VITON seals and zinc-plated carbon steel or AISI 316 stainless steel shafts.

VITON Seals & Zinc-Plated Shafts AF02590 2 or 2.5" Butterfly valve, EPDM, 150 PSI

- AF02591** 3" Butterfly valve, EPDM, 150 PSI
AF02592 4" Butterfly valve, EPDM, 150 PSI
AF02595 6" Butterfly valve, EPDM, 115 PSI
AF02596 8" Butterfly valve, EPDM, 115 PSI
AF16068 10" Butterfly valve, EPDM, 115 PSI

VITON Seals & 316 Stainless Shafts

- AF16713** 2 & 2.5" Butterfly valve, EPDM, 150 PSI
AF16714 3" Butterfly valve, EPDM, 150 PSI
AF16715 4" Butterfly valve, EPDM, 150 PSI
AF16717 6" Butterfly valve, EPDM, 115 PSI
AF16718 8" Butterfly valve, EPDM, 115 PSI
AF22412 10" Butterfly valve, EPDM, 115 PSI



PVC Butterfly Valve

Astral PVC Gear operated Butterfly valve

– Injection molded PVC construction with EPDM seals and zinc plated shafts. Includes hand-wheel and position indicator for easy operation.

- AF08978** 4" 150 PSI
AF08981 6" 115 PSI
AF08983 8" 115 PSI
AF16063 10" 115 PSI

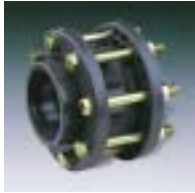


PVC Gear Operated Valve

Flange Kits

Astral Schedule 80 PVC Butterfly Valve Flange Kit – Constructed of schedule 80 PVC flanges complete with hardware to be used with the Astral line of butterfly valves. Available with zinc-plated or stainless steel hardware.

AF02370US	2" Kit Stainless Steel bolt
AF02371US	2.5" Kit Stainless Steel bolt
AF02372US	3" Kit Stainless Steel bolt
AF02373US	4" Kit Stainless Steel bolt
AF02376US	6" Kit Stainless Steel bolt
AF02378US	8" Kit Stainless Steel bolt
AF02379US	10" Kit Stainless Steel bolt



Flange Kit

Flange Bolt-Pack Kits - For assembly convenience, each kit contains everything you need to connect two flanges together: the correct number of bolts, nuts, and washers for 150-lb. flanges, and a neoprene full-face gasket (bolt pack only). All hardware is zinc- or stainless steel-plated. *Call for specifications and information.*



Flange Bolt Pack

Flow Meters

Model F300 Blue White Flow Meters – Designed with the pool industry's needs in mind, the F300 Series is a low cost, accurate pitot tube type flow meter. Mounts on horizontal pipe only. Specify for pipe or copper tubing.

F30150	1.5" size, 20-100 gpm
F30200	2" size, 40-150 gpm
F30250	2.5" size, 60-240 gpm
F30300	3" size, 80-300 gpm
F30400	4" size, 125-500 gpm
F30600	6" size, 250-1050 gpm
F30800	8" size, 500-1900 gpm



F-300 Flow Meter

Vertical Mount Flow Meters D-300 / U-300

– For installations with a minimal amount of room; more vertical pipe than horizontal. **Please specify if direction of flow is up or down.**

U30150	1.5" size, 20-100 gpm, flow: up
D30150	1.5" size, 20-100 gpm, flow: down
U30200	2" size, 20-100 gpm, flow: up
D30200	2" size, 20-100 gpm, flow: down

Blue & White Digi-Flow – Ideal for those who require rate of flow only. Comes pre-programmed and ready for installation. The meter LCD display is powered with 2 AAA batteries. The spinning of the paddle in the line generates a signal that registers as gpm on the display. Please specify pipe type (Sch. 40 or Sch. 80).

Features:

- Display update time: every 2 sec
- Enclosure ABS material
- Accuracy + or – 2%
- Saddle mount design for easy installation

RB150S8	1.5" size
RB200S8	2" size
RB300S8	3" size
RB400S8	4" size
RB600S8	6" size
RB800S8	8" size

Data Industrial Flow Monitors – Model 1500

– The Data Industrial Series 1500 flow meter is an economical, full-featured digital flow monitor. The two line x 8 character alphanumeric display can be configured by the user to display flow rate and flow total separately or simultaneously. Accepts pulse, sine wave, or an optional 4-20 mA analog input signal. Software contains 8 flow rate and 4 total flow units of measure. Complete unit include 220B flow sensor and appropriate installation clamp or tee assembly. Available in steel or PVC.

1325	1.5" size
1326	2" size
1327	3" size
1328	4" size
1329	6" size
1330	8" size

Signet Analog Flow Meter – Model MK509

requires no external power source or battery. Quick installation on instrument panel, pipe, or wall. Combine with the MK515 flow sensor and installation fitting and you've got a completely self-contained, affordable flow monitoring system. Meter can be mounted up to 200 ft. away from sensor and is accurate within 2% of full scale. Available in steel or PVC.

1372	1.5" size
1373	2" size
1374	2.5" size
1375	3" size
1376	4" size
1378	6" size
1379	8" size



Metallic Flow Sensor - 316 stainless steel or brass construction measures flow rates as low as 0.1 m/s (0.3 ft/s).

RH5931529 - Stainless Steel High Performance Flow Sensor 1 1/2" MNPT.

RH5931530 - Stainless Steel hot-tap flow sensor 1 1/2" MNPT.

RH5931541 - Stainless steel high performance flow sensor with removable electrodes 1 1/2" MNPT.

RH5931543 - Stainless steel hot-tap flow sensor with removable electrodes 1 1/2" MNPT.



Flow Sensors

Pressure Gauges

Stainless Steel, Bronze, Brass Premium Gauges - Available in 2 1/2" or 4" inch diameter, with bottom connection or back connection. Available in 0-30, 0-60, 0-100, 0-160, 0-200, and 0-300 psi. Also available in plastic case or panel-mount gauges.

